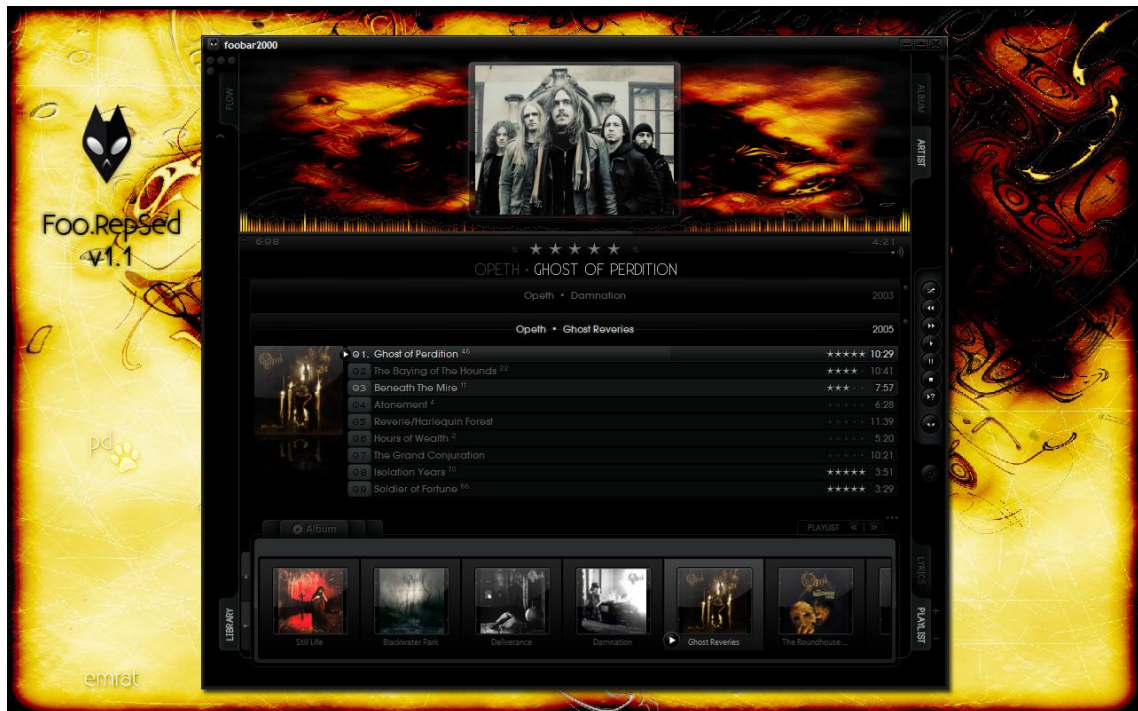


Foo.RepSed v1.1



I. Components:

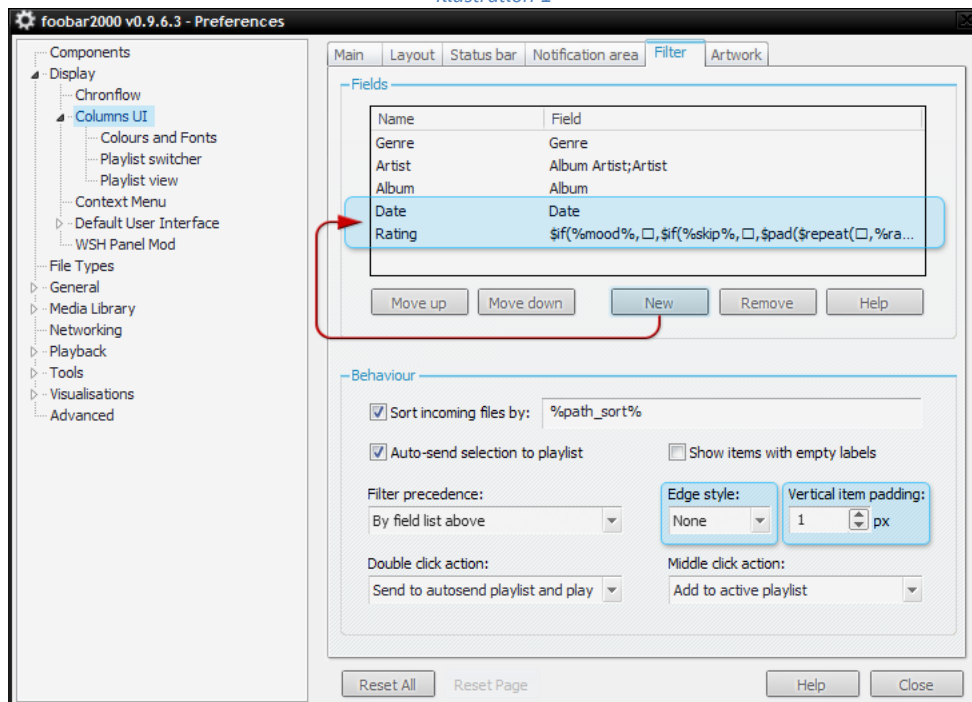
✓ foo_ui_columns.dll	Columns UI 0.3.6.9	→ link
- foo_uie_albumlist.dll	Album list panel 0.2.3 beta	→ link
- foo_uie_panel_splitter.dll	Panel Stack Splitter 0.3.7.a	→ link
✓ foo_uie_elplaylist.dll	ELPlaylist 0.6.5.2b	→ link
✓ foo_uie_vis_channel_spectrum.dll	Channel Spectrum panel 0.17.2	
✓ foo_uie_trackinfo.dll	Track info panel 0.8	→ link
- foo_uie_tabs.dll	Tabbed Panel Modified 0.2.7	→ link
✓ foo_chronflow.dll	Chronial's Coverflow 0.3.0	→ link
✓ foo_uie_graphical_browser.dll	Graphical Browser rev015	→ link
✓ foo_uie_quicksearch.dll	Quick Search Toolbar 2.8l	→ link
✓ foo_uie_lyrics.dll	Lyric Show Panels 0.3.3.0	→ link
✓ foo_uie_trackinfo_mod.dll	Track info panel mod 0.8.0 b	→ link
✓ foo_uie_wsh_panel.dll	WSH Panel	→ link
- foo_skip.dll	Skip Track 0.4	→ link
- foo_exvar.dll	Extended Variables 0.3.1	→ link
- foo_playcount.dll	Playback Statistics 2.1.9	→ link
- foo_jesus.dll (Optional)	Autosave 0.0.3	→ link

If you are updating to version 1.1, just download the components highlighted red

II. Installation

- Install the fonts included in the folder "**Fonts**"
- Extract the folder **RepSed** within the **themes** folder of foobar2000:
C:\Program Files\foobar2000\themes
- Before you import the file FCL is necessary to add the fields: "**Date**" & "**Rating**" in filter.
Preferences → Display → Columns UI → Filter

Illustration 1



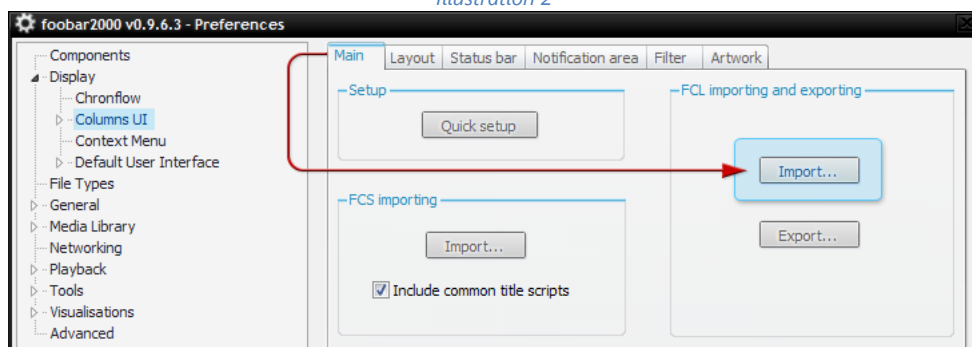
If you want you can add the following code to the value of Rating.

```
$if(%mood%, ♥, $if(%skip%, ☹, $pad($repeat(★, %rating%), 5, ☹)))
```

Note: Make sure you have the font "**Arial Unicode MS**" installed.

- Now you can import the file FCL (*FooRepSed.fcl*)

Illustration 2



III. Configuration

1. Cover & Artist photo

Foo.RepSed will show:

- Cover image renamed as **"folder"** or renamed with the name of the Album e.g. **"The Wall"**
- Artist photo renamed as **"Artist"** or renamed with the name of the Artist e.g. **"Pink Floyd"**

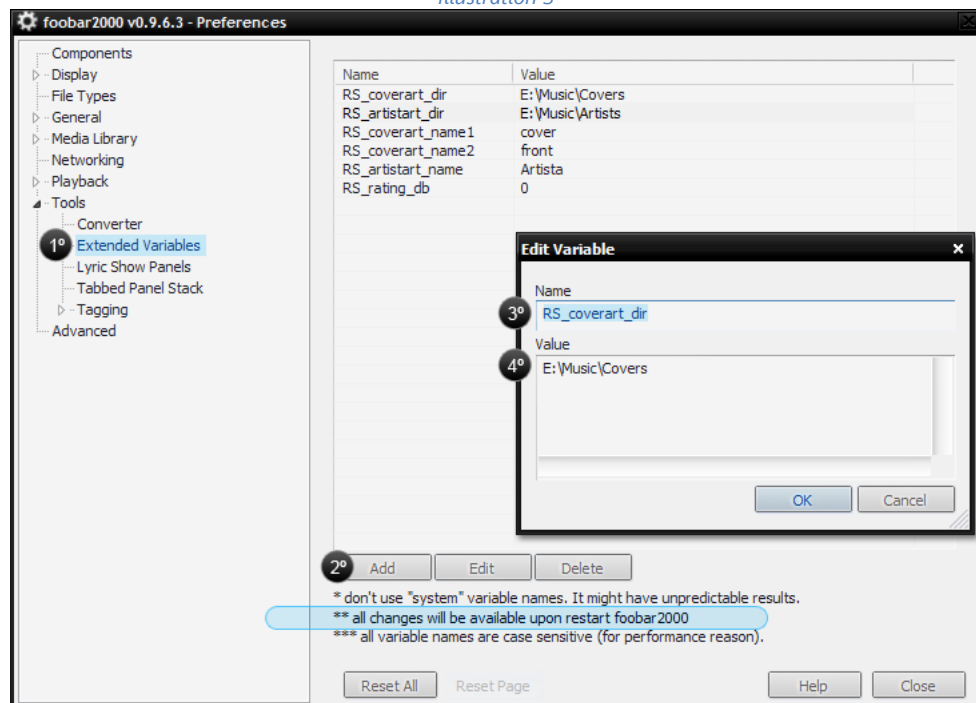
If the previous values are not of your preference, you have the following variables:

- **RS_coverart_dir** : Use this variable if the Covers are all within a single folder
- **RS_artistart_dir** : Use this variable if the Artists photos are all within a single folder
- **RS_coverart_name1** : Use this variable for the name of the Cover image. e.g. *Cover, Front, etc*
- **RS_coverart_name2** : " " " " " " " "
- **RS_artistart_name** : Use this variable for the name of the Artist photo e.g. *Band, Photo, etc.*

go to: *Preferences* → *Tools* → *Extended Variables*

example:

Illustration 3



Note:

- **** all changes will be available upon restart foobar2000**
- If you have all covers in a single folder, the filename must be equal to name of the *Album* e.g. **"The Wall"** or *Artist - Album* e.g. **"Pink Floyd – The Wall"**
- If you have all photos of the artists in a single folder, the filename must be equal to name of the *Artist* e.g. "The Door".
- Invalid character \ / : * ? < > | can only be replaced by this " _ " e.g. **"AC/DC"** to **"AC_DC"**

2. Rating Mode (Buttons)

Uses this variable and the value of your preference to determine rating mode.

RS_rating_db : 1 = Rating will be written in the database of foobar2000 **PlaybackStatistics.dat**

0 = Rating will be written in the metadata of the audio file

3. Chronflow

In order that the variables exert on "Chronflow", copy the following code in "Source".

```
$replace(%path%,%filename_ext%,)folder.jpg  
$replace(%path%,%filename_ext%,)%album%.jpg  
$replace(%path%,%filename_ext%,)$replace(%album artist%,\./,:;_*?,"'<>|,_) - %album%.jpg  
$replace(%path%,%filename_ext%,)%RS_coverart_name1%.jpg  
$replace(%path%,%filename_ext%,)%RS_coverart_name2%.jpg  
%RS_coverart_dir%%album%.jpg  
%RS_coverart_dir%$replace(%album artist%,\./,:;_*?,"'<>|,_) - %album%.jpg
```

Illustration 4

